



الصندوق القطري لرعاية البحث العلمي
Qatar National Research Fund

Member of Qatar Foundation

National Priorities Research Program

Exceptional Proposals

(NPRP – EP)

Policies and Guidelines

July 2013

Changes appear in blue

Table of Contents

1. Overview.....	3
2. Eligibility.....	3
3. Program Policies and Guidelines.....	3
4. Proposal Submission Timeline	5
5. Online Submission.....	6
6. Proposal Evaluation and Scoring.....	6
7. Award Selection Process.....	6



1. Overview

- 1.1. The NPRP - EP is an extra funding opportunity for proposals of exceptional scientific merit and benefits to Qatar that require funds in excess of the normal level of NPRP funding. The NPRP-EP total budget is up to US\$ 5m for extended project duration of up to five years.
- 1.2. Proposal should be aligned to one of Qatar National Research Strategy (QNRS) objective (http://qnr.org/about_qnr/qnrs/).
- 1.3. All terms and conditions of the normal NPRP, as described in the original NPRP RFP; (http://www.qnr.org/funding_programs/nprp/download_center/) are applicable for the NPRP - EP, unless otherwise amended in this RFP.

2. Eligibility

- 2.1. The LPI must have at least ten peer-reviewed publications
- 2.2. The LPI must be affiliated to an institution inside Qatar; LPIs from outside Qatar are not eligible to submit unless they will relocate to Qatar for the entire duration of the project period.
- 2.3. The LPI must be a resident of the state of Qatar for the duration of the project. If funded, a copy of the Resident Permit (RP) will be requested.
- 2.4. In addition to the LPI, key investigator's roles are limited to PI.
- 2.5. The LPI is not eligible to apply for NPRP - EP if he / she have another proposal currently funded by QNRF in the NPRP - EP program
- 2.6. If awarded, the role as a LPI, or PI will count towards the total number of permissible roles as allowed in the NPRP program.

3. Program Policies and Guidelines

- 3.1. At least 80% of the research budget, measured in QNRF funded person-days must be conducted by the research team in Qatar. However, as it is fully expected that a coordinated research program funded by QNRF could take place, in part, at other venues, LPIs may collaborate with accredited research organizations in other parts of the world.



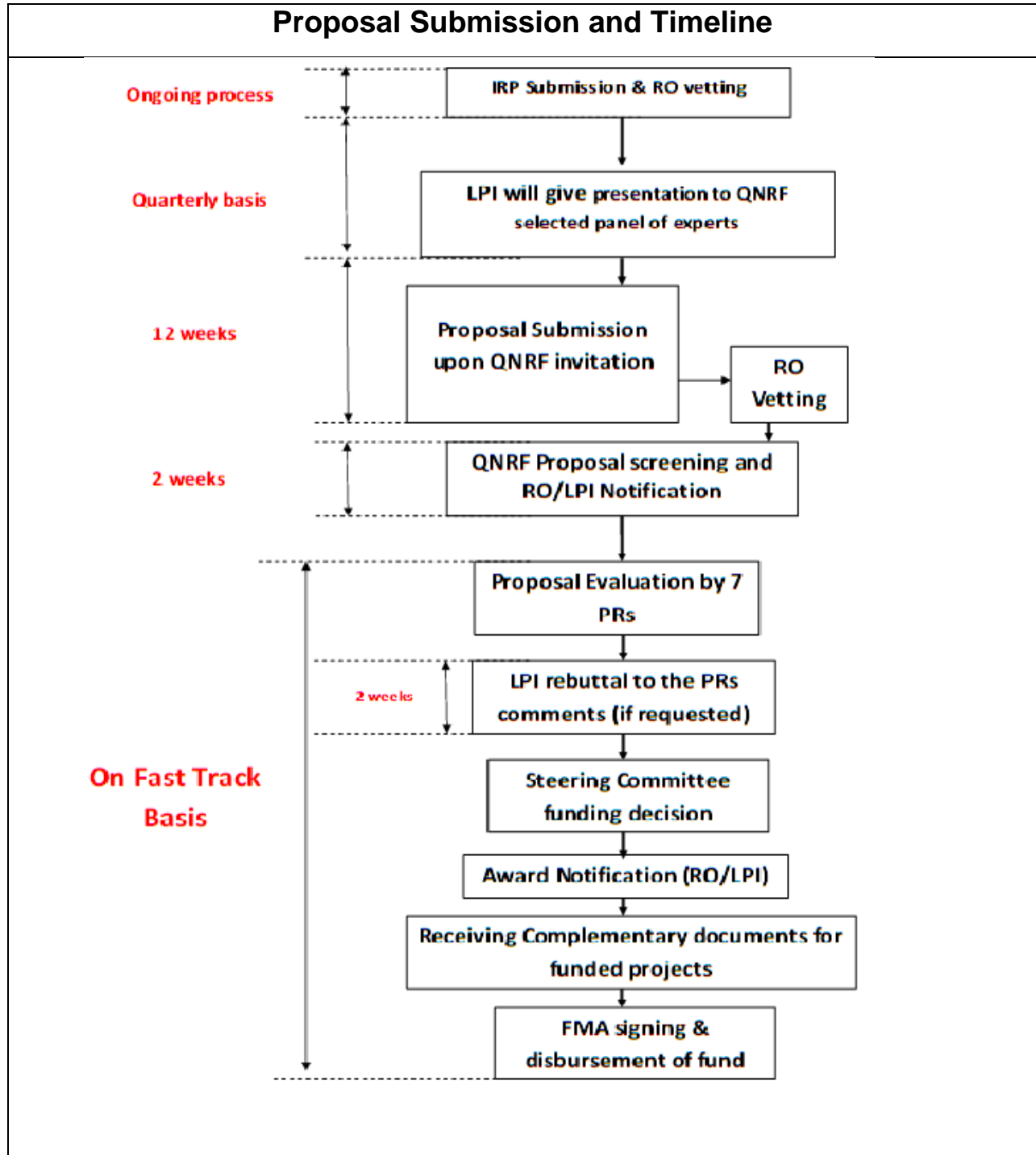
- 3.2. At least 65% of the effort must be inside Qatar.
- 3.3. Personnel cost is based on the percentage of effort.
- 3.4. All equipment is to be budgeted in the 80% of the total budget to be expended inside Qatar.
- 3.5. LPIs interested in applying for NPRP Exceptional Proposals are required to first submit Initial Research Proposals (IRPs) through QNRF's online submission system *instead of submitting an Lol*. The information requested in the IRP is entered online and should represent no more than 10 A4 pages, In this IRP, the LPI should address the following issues:
 - 3.5.1. Intellectual merit;
 - 3.5.2. Novelty of the concepts or ideas;
 - 3.5.3. Feasibility in implementing the project;
 - 3.5.4. Expected benefit and impact for Qatar;
 - 3.5.5. Qualification and experience of the research team;
 - 3.5.6. Estimated budget and the timeline;
 - 3.5.7. Potential applications and sustainability;
- 3.6. As part of the IRP submission process LPIs will then be requested to upload a 15 minutes long NPRP-EP presentation. The RO will vet the IRP, and only vetted IRPs will go to the next step.
- 3.7. LPIs will give a presentation of their proposals to a QNRF-selected panel of experts, who may decline or pass the IRP with or without specific conditions.
- 3.8. LPIs of the "passed" proposals will then be invited to submit their final proposals, which should be vetted by their respective ROs prior to online submission.
- 3.9. All submitted proposals will be screened for compliance with current requirements as detailed in this RFP, including the panelist conditions.
- 3.10. Screened proposals will be sent to seven PRs for evaluation using the NPRP evaluation criteria.
- 3.11. QNRF may request LPIs to provide a rebuttal to PRs' comments and concerns within a period of two weeks of the LPI's receipt of such comments.
- 3.12. Resubmission of the IRP and the proposal resubmission is not allowed.



4. Proposal Submission Timeline

4.1. The NPRP – EP submission is an ongoing process.

4.2. The following flowchart illustrates the steps necessary for proposal submission by the LPI, starting with submission of the IRP, through to notification of the final award:



5. Online Submission

5.1. QNRF has created a special ongoing submission channel for NPRP - EP proposals at <https://www.qnrfsubmission.org/>

6. Proposal Evaluation and Scoring

6.1. QNRF will solicit up to seven PRs for each NPRP – EP proposal.

6.2. The peer reviewers' evaluation criteria for the submitted proposals are similar to the NPRP

7. Award Selection Process

The funding decision will be based on a combination of the following parameters:

- Exceptional quality and scientific merit;
- Exceptional importance to Qatar;
- Collaboration with stakeholders inside Qatar;
- Peer reviewers' funding recommendations.

